



**OPERATION
LIFESAVER**

Rail Safety Education

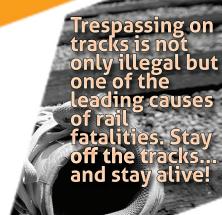
RAIL SAFETY

Tips for Hunters & Fishermen

Railroad tracks and trestles are for trains, not for hunting or fishing!

- Railroad tracks are private property. Using railroad property to hunt, fish or operate snowmobiles or ATVs is trespassing!
- Trains overhang the tracks by at least three feet on both sides. If you are next to the tracks, you can still be hit by the train.
- Distractions can be deadly! Don't use cell phones, GPS or text while driving, especially when you're near train tracks!
- Cross tracks only at designated crossings – be alert for a crossbuck, advance warning sign or other warnings that you are approaching a railroad crossing.
- Slow down and prepare to stop at the crossing. If operating an ATV or snowmobile, reduce engine noise by powering down.
- Look both ways and listen carefully. Look **again** before you move. Trains are quieter and faster than you think.

Learn More about Rail Safety.
www.nebraskaol.org



**Trespassing on
tracks is not
only illegal but
one of the
leading causes
of rail
fatalities. Stay
off the tracks...
and stay alive!**



WHAT TO DO IF Your Vehicle Stalls or Hangs Up on the Tracks.

1. GET OUT IMMEDIATELY.

Evacuate your vehicle. (Trains traveling at 60 mph may take a mile or more to stop.)

2. MOVE AWAY

Walk in the direction of the oncoming train, but away from the tracks at a 45-degree angle. (If your vehicle is hit, debris will spread out from the tracks in the same direction the train is moving.)

3. LOCATE THE EMERGENCY PHONE NUMBER.

When you are safely away from the tracks, find the railroad's emergency phone number and the DOT crossing identification number posted near the crossing. (See sample locations below.)

Railroad Identification, Emergency Phone Numbers, and DOT Number Locations.



4. CALL FOR HELP!

Call the railroad's emergency phone number, the local police, or 911. Tell them a vehicle is on the tracks. Provide the location, crossing number (if posted), and the name of the road or highway.

Railroads' Emergency Phone Numbers

Amtrak: 1-800-331-0008

BNSF Railway: 1-800-832-5452

CSX: 1-800-232-0144

Canadian National: 1-800-465-9239

Canadian Pacific: 1-800-716-9132

Kansas City Southern: 1-877-527-9464 or 1-800-892-6295

Norfolk Southern: 1-800-453-2530

Union Pacific: 1-888-877-7267

Call the local police or 911 if you cannot locate the railroad emergency phone number at the site.

