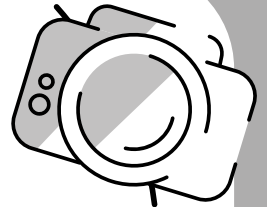




WORD SCRAMBLE



OLARRADI

OOKL

SELNTI

RISGNOSC

KSOCRSUCB

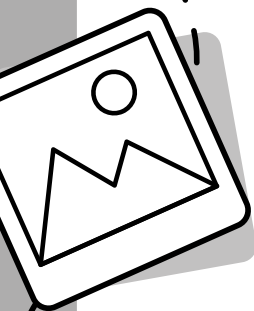
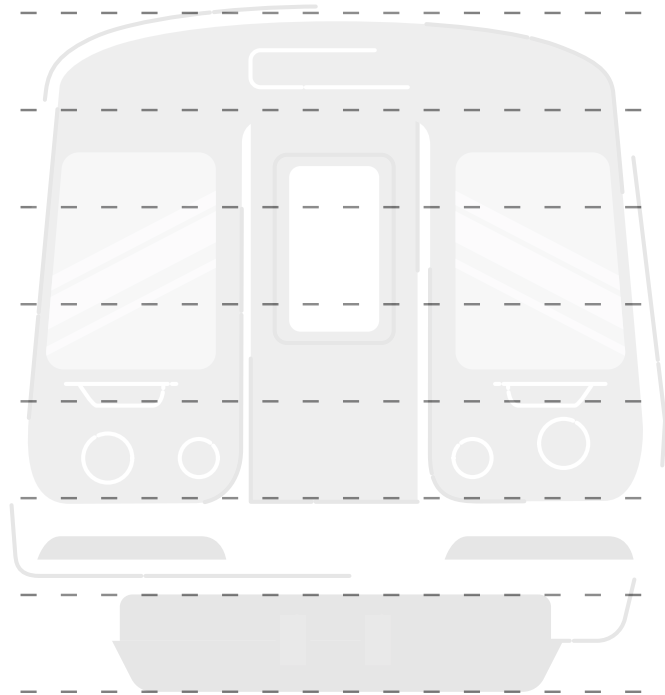
BAWYUS

RSCATETER

GLHIT IRLA

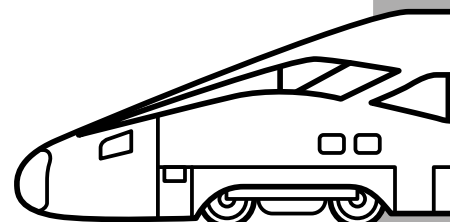
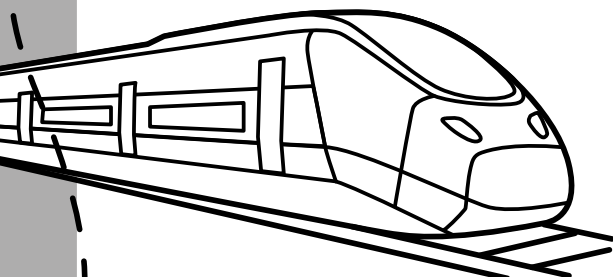
UTMCRMEOE RLAI

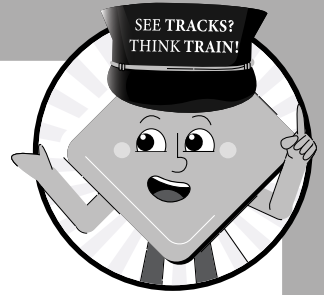
ESE CAKRTS KNIHT RTIAN



Railroad, Look, Listen, Crossing, Crossbuck, Subway, Streetcar,
Light rail, Commuter rail, See Tracks Think Train

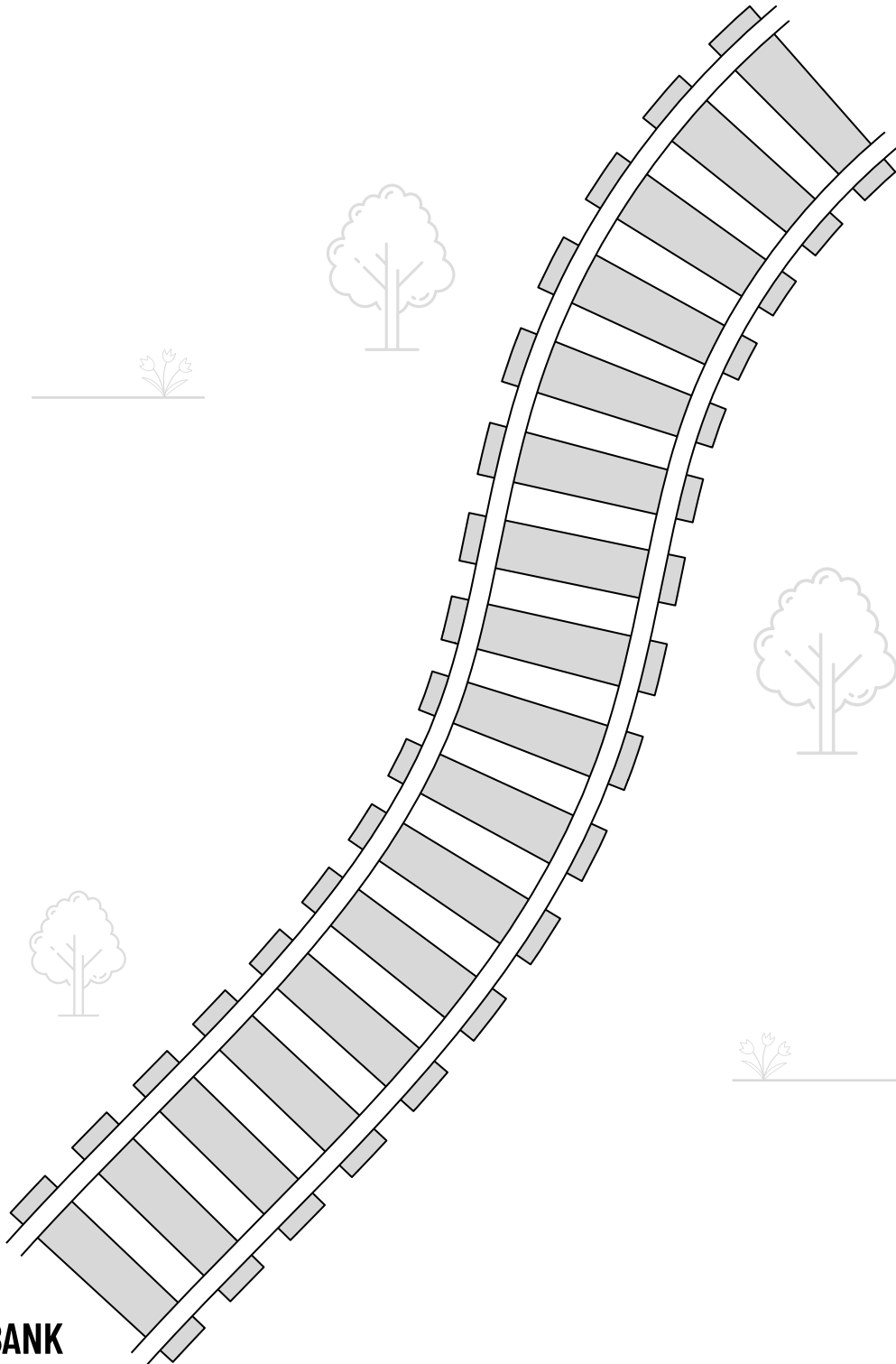
ANSWERS





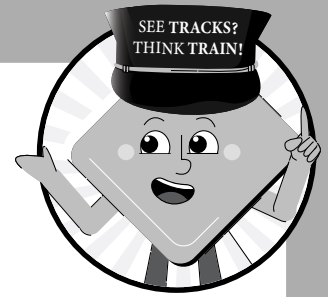
SPY WITH YOUR EYES

Draw the things you see on your train journey.



WORD BANK

Train - Warning sign - Crossbuck - Flashing lights - Train station -
Multiple Track Sign - Car - Bicycle - ...



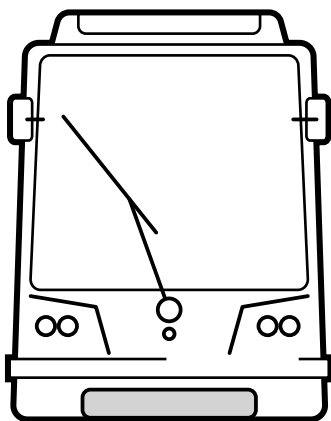
FILL IN THE BLANKS

1. Mind the _____ between the platform and the train.
2. Stay _____ around railroad tracks.
3. Remember to cross train tracks _____ at designated pedestrian or roadway crossings.
4. Never _____ on tracks; it's illegal trespass and highly dangerous.
5. Trains can transport either people and _____.
6. Always stand behind the _____ colored line at station platforms.
7. Pay attention to all _____ at the station.
8. _____ run in the middle of the street and share the road with cars.
9. Trains can run on _____ track at _____ time.
10. Trains are _____ than their tracks.

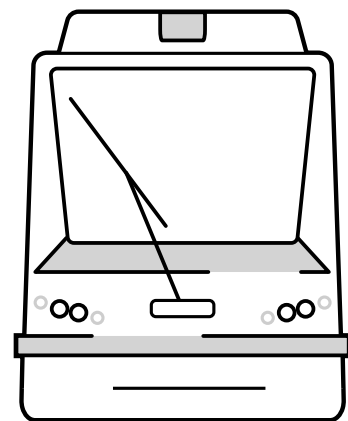
1. Gap 2. Alert 3. Only 4. Walk 5. Freight 6. Bumpy
7. Announcements 8. Streetcars 9. Any, Any 10. Wider

ANSWERS

STREETCAR



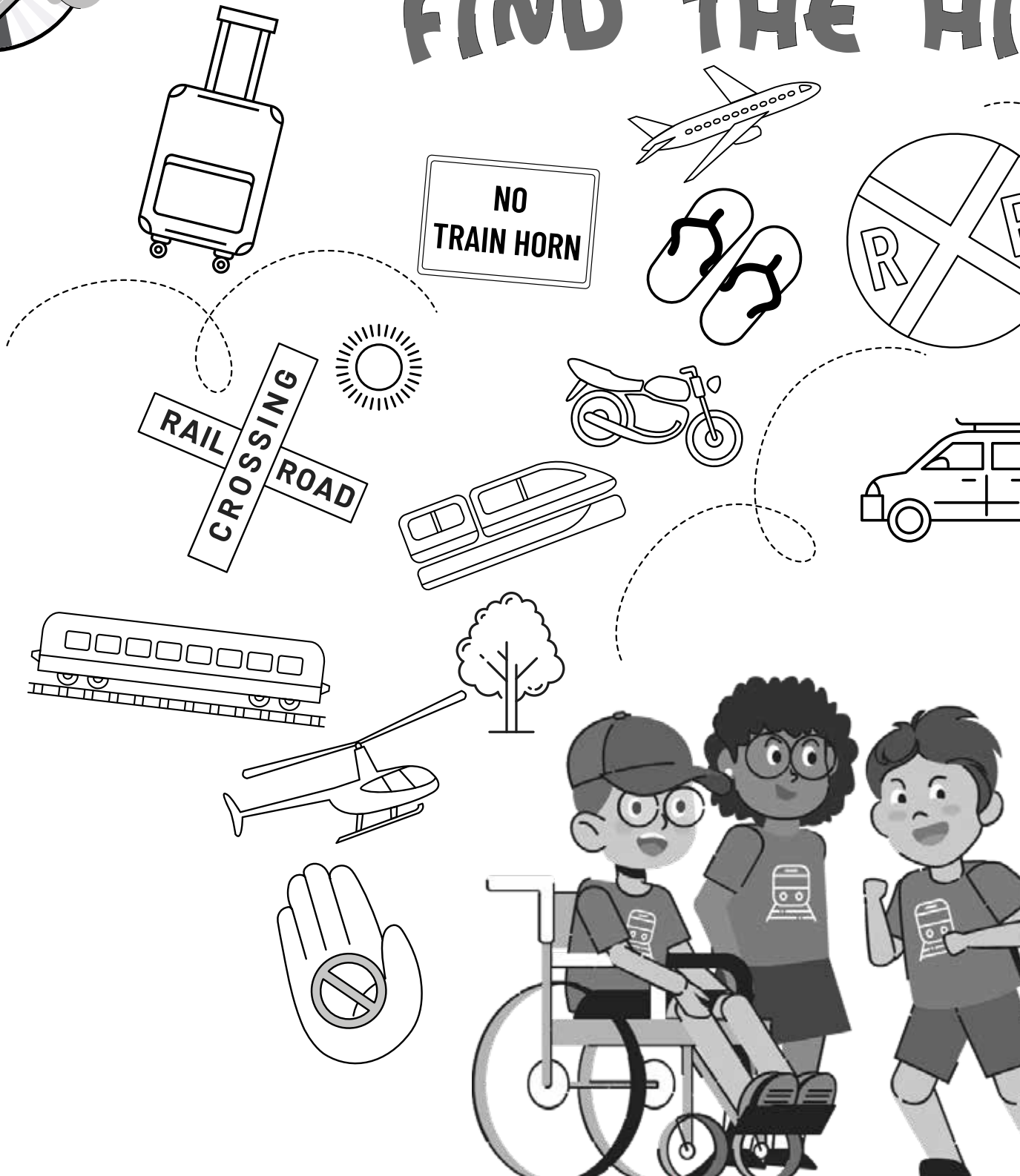
LIGHT RAIL







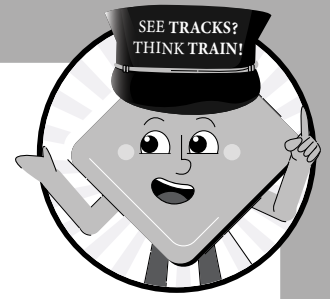
FIND THE HIDE-OUT



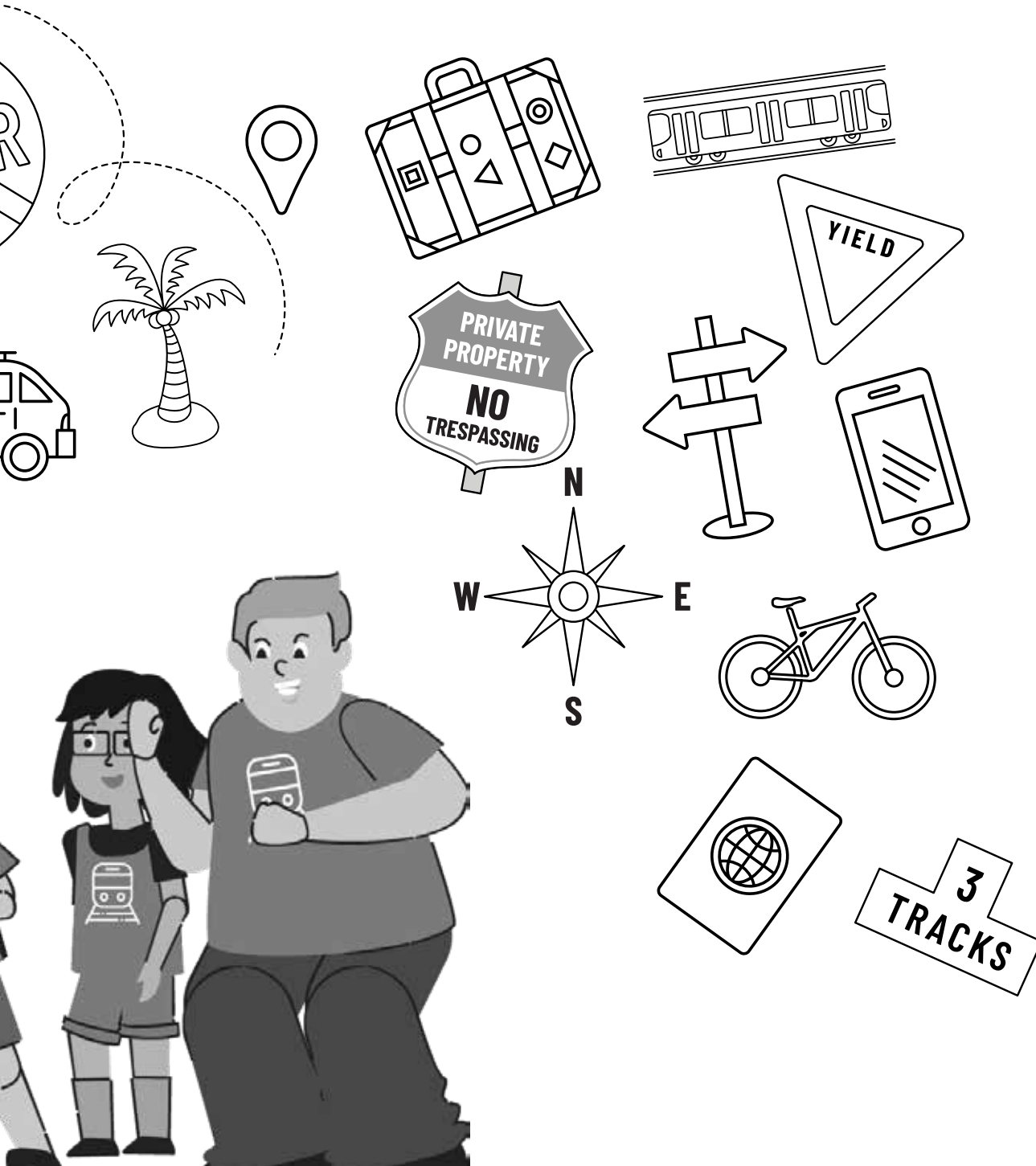
BICYCLE

YIELD SIGN

NO TRESPASSING SIGN



HIDDEN ITEMS



TRAIN
(there are more than 1!)

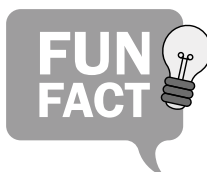
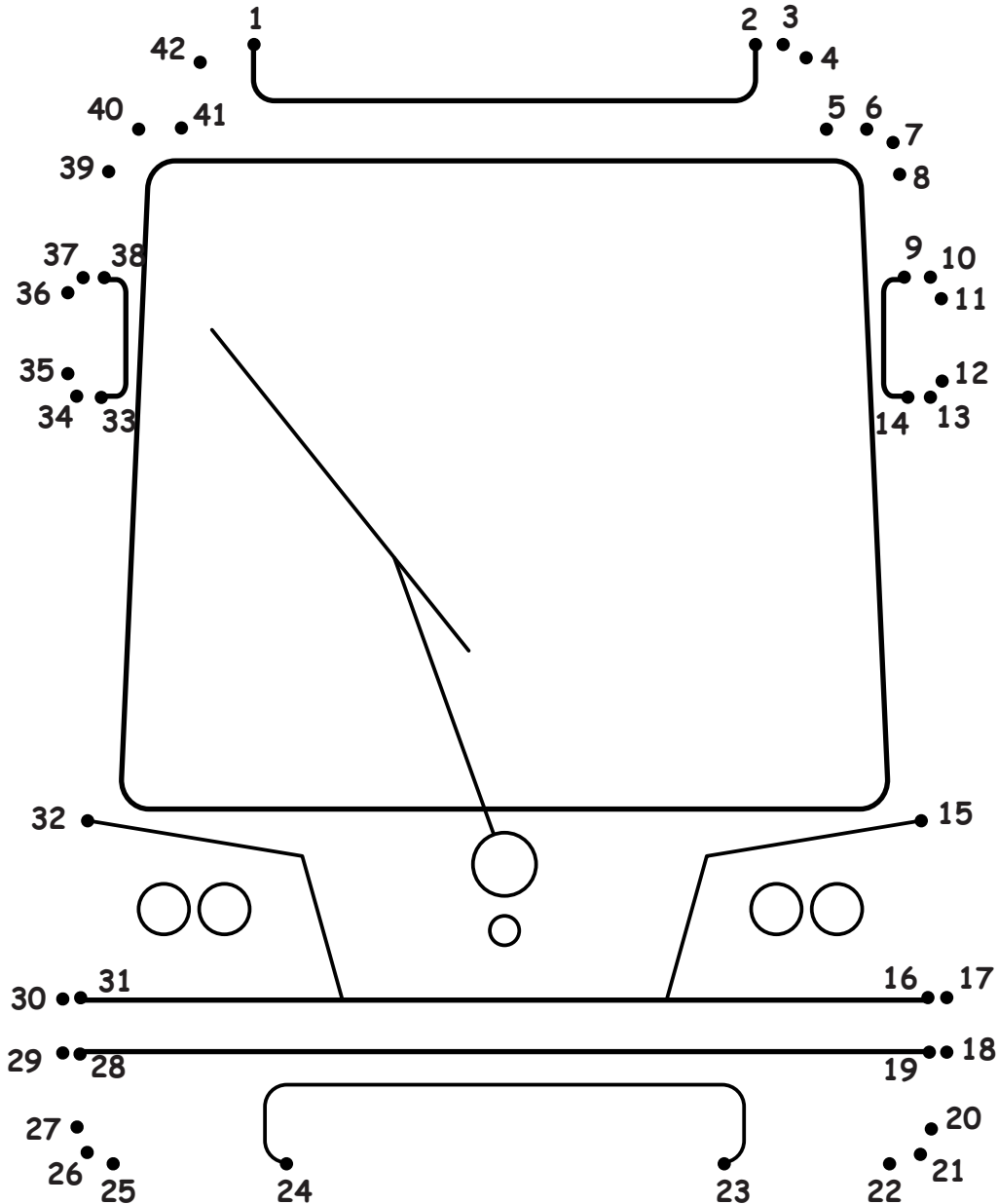
CROSSBUCK

CELL PHONE



★CONNECT THE DOTS★

Connect the dots to create a Streetcar.



"Streetcars travel on tracks that are part of the roads. They can also be called trams or trolleys. While trains often have multiple cars attached to each other, streetcars usually travel one car at a time and use electricity to work."



COLOR THE TRAINS YOU SEE BELOW*

Only trains belong on **TRACKS**

